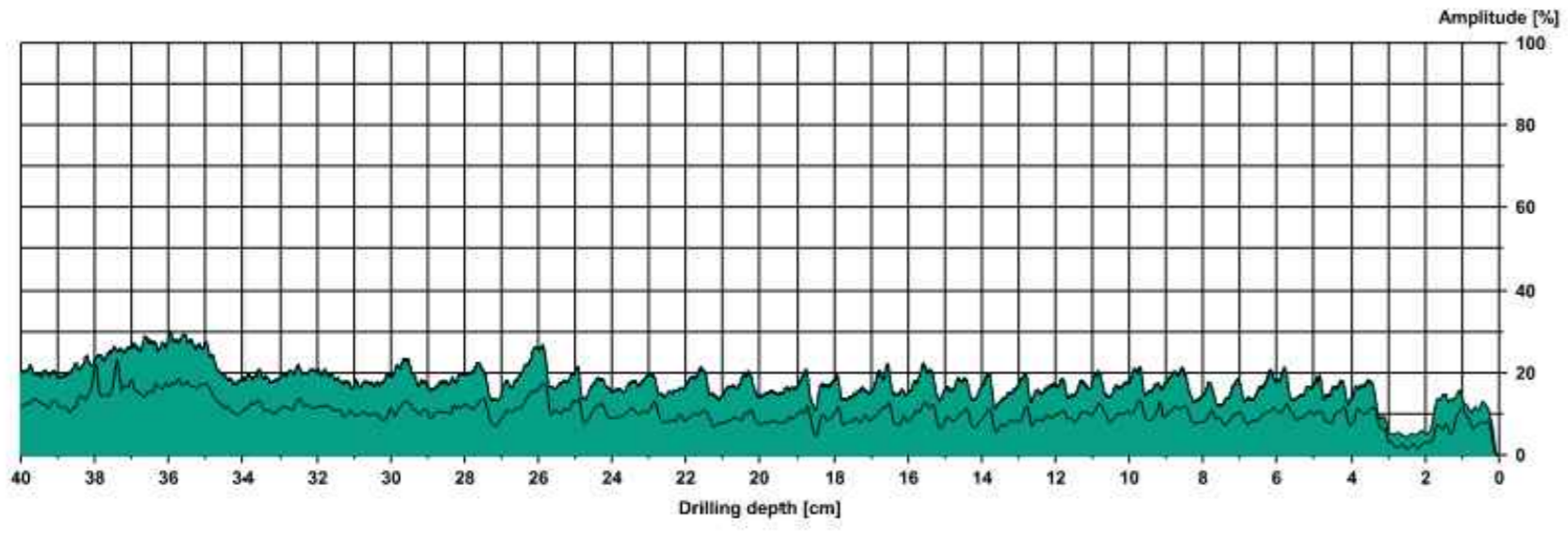
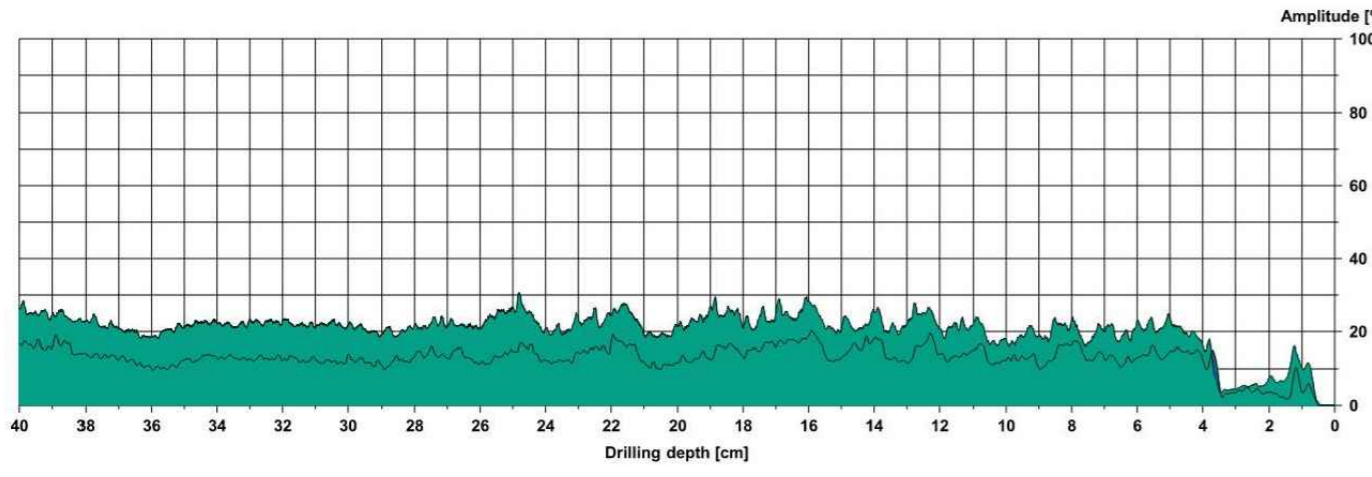


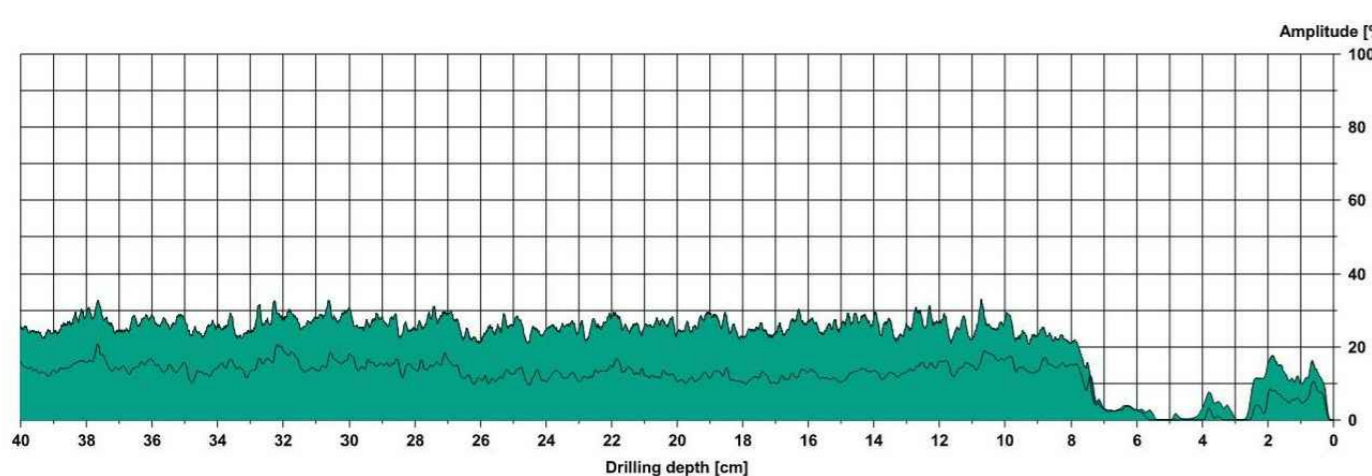
Control Resistograph reading on Healthy Stem



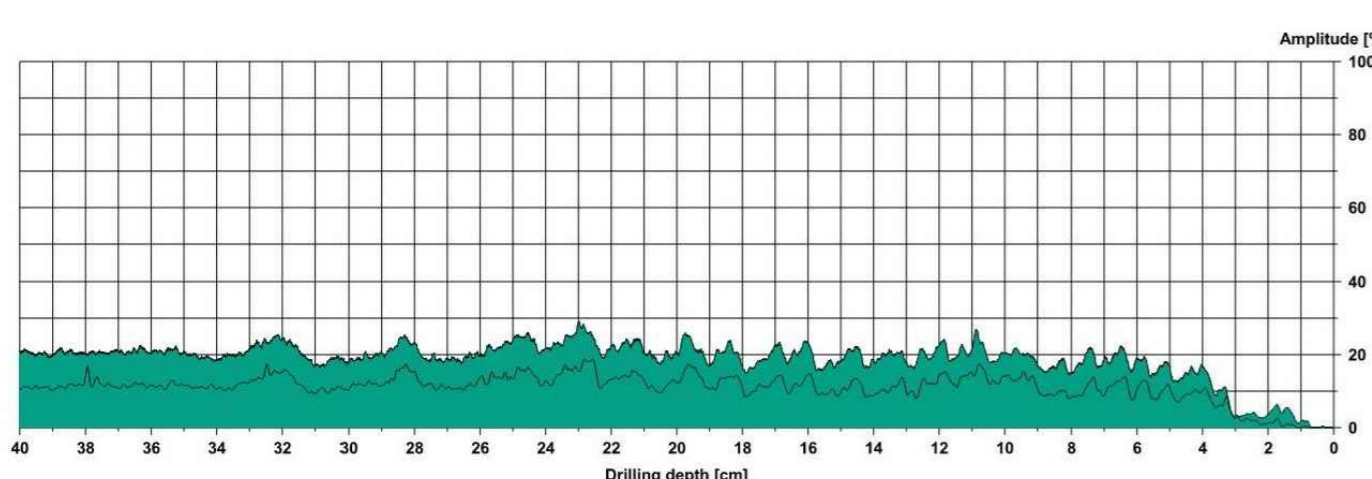
M9



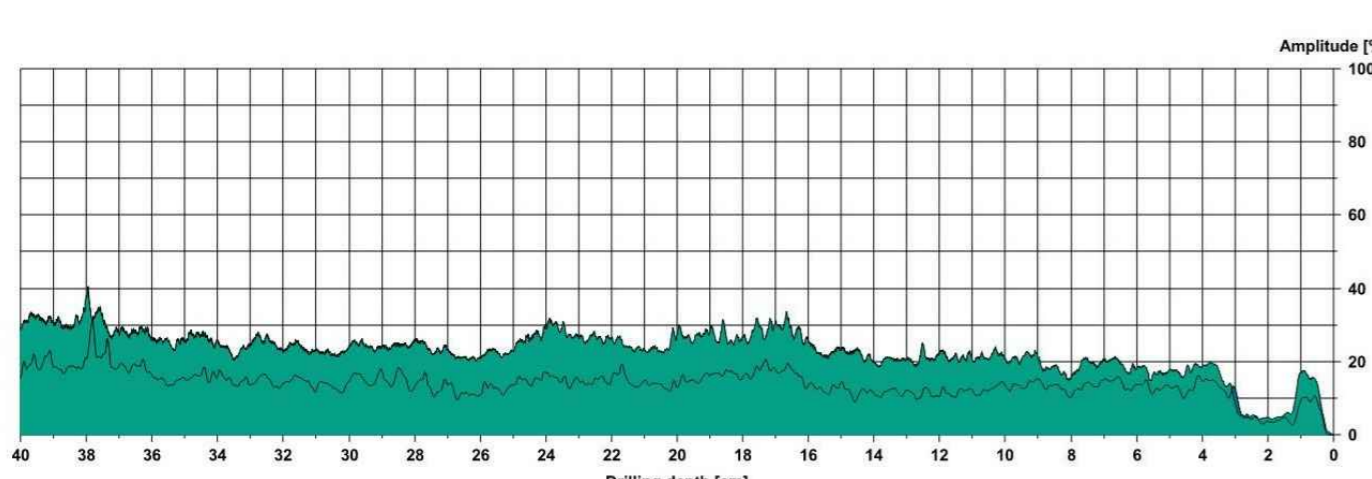
M10



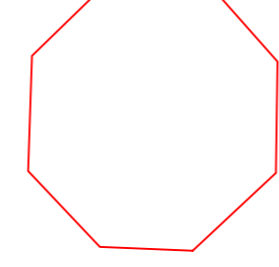
M11



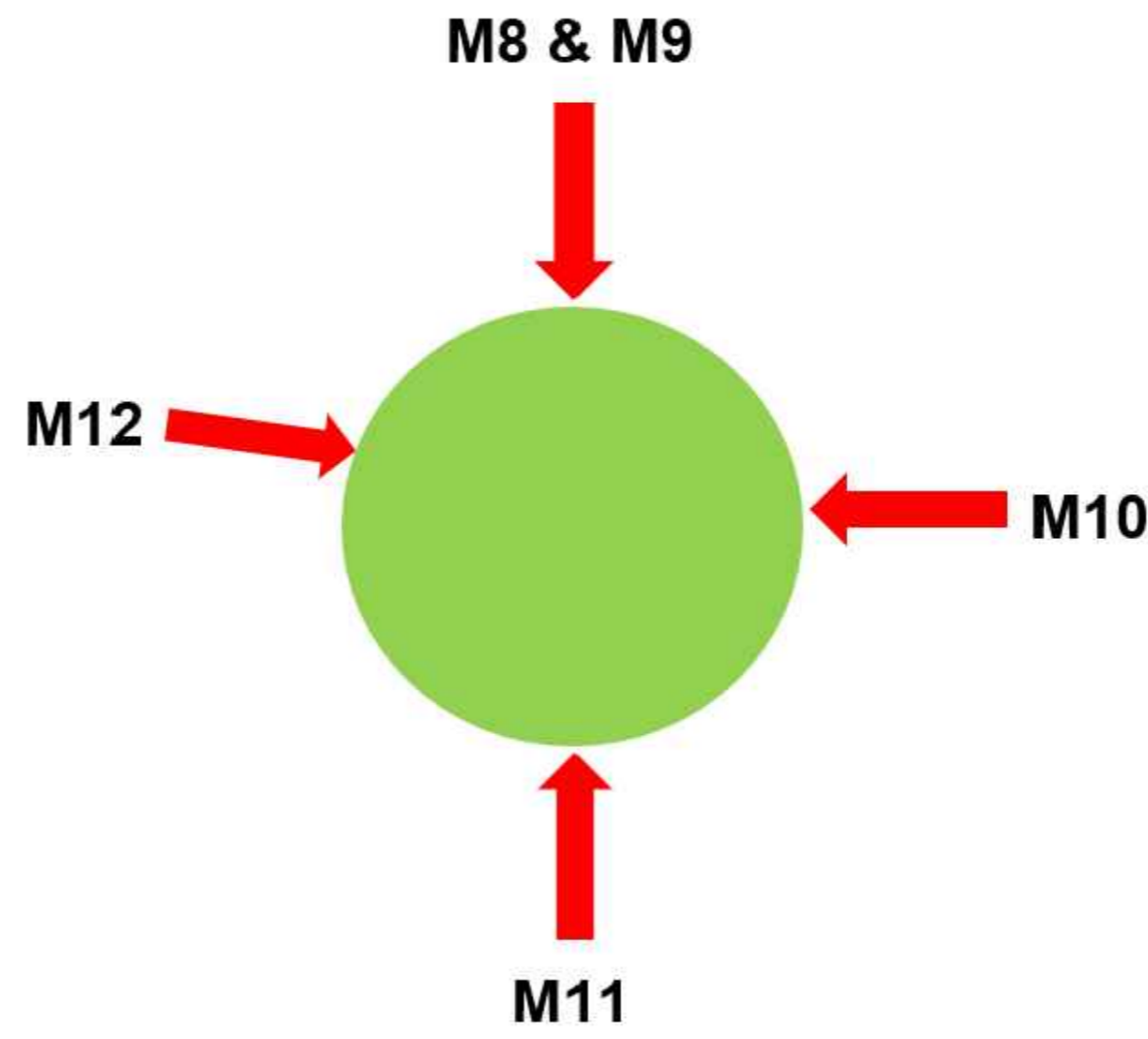
M12



Bandstand



T002



CATEGORY AND DEFINITION

Trees unsuitable for retention

Category U	Those in such condition that they cannot realistically be retained as living trees in the current land use for longer than 10 years
Trees to be considered for retention	
Category A	Trees of high quality with an estimated remaining life expectancy of at least 40 years
Category B	Trees of moderate quality with an estimated remaining life expectancy of at least 20 years
Category C	Trees of low quality with an estimated remaining life expectancy of at least 10 years, or young trees with a stem diameter below 150mm

NOTE:

Hayden's Arboricultural Consultants were not provided with a Topographical Survey or Base Plan showing the positions of the trees/landscape features on this site, so their locations have been fixed using GPS. As such the position of the trees/landscape features should not be taken as exact but gives a fair distribution of their locations on site.

North (Indicative)



LEGEND

	Tree requiring work within 6 Months - Priority 2
--	--

12/11/20 DH Based on OS Map

Rev: Date: By: Revision:

The position, condition, and dimensions of the trees are based on a site survey undertaken on 11/11/20

"The original of this drawing was produced in colour - a monochrome copy should not be relied upon"

Scale 1:200

0m 4m 8m 12m 16m 20m



© HAYDEN'S 2020

5 Moseleys Farm Business Centre
Fornham All Saints,
Bury St Edmunds
Suffolk IP28 6JY

Head Office: 01284 765391

Southern Office: 01722 657423

www.treesurveys.co.uk

Email: info@treesurveys.co.uk

Client:	Christchurch Town Council	Drawing Title:	Resisitograph
---------	---------------------------	----------------	---------------

Site:	Christchurch Quay, Christchurch		
-------	---------------------------------	--	--

Date:	04/02/21	Drawn By:	DH	Cad File Ref:	C:\Pro\8481-D-Resi-Christchurch Quay
-------	----------	-----------	----	---------------	--------------------------------------

Scale:	1:500 (A1)	Checked By:	LB	Drawing No:	8584-D1-Resistograph	Rev:	-
--------	------------	-------------	----	-------------	----------------------	------	---